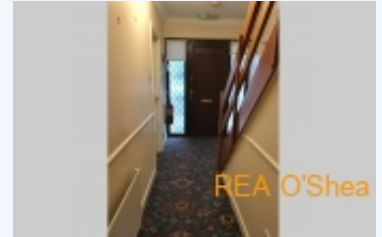
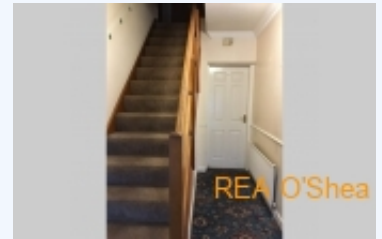




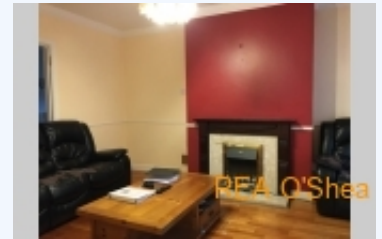
REA O'Shea & O'Toole



REA O'Shea



REA O'Shea



REA O'Shea

1 Ursuline Crescent, Waterford

Four bedroom detached home in Ursuline Crescent

Two Storey 4 Bedroom Detached House. Located in a desirable residential area convenient to schools, public transport approx 2.5 km south of Waterford City centre. The property is located at the entrance to the estate and stands on a large end site (c. 360 sq.m) with front garden and good off street parking and an enclosed rear garden. The property was constructed c. 1995 is well presented and has been well maintained.

Accommodation Entrance Hall Sitting room - 3.6m x 4.4m Dining room - 3.5m x 3.3m Kitchen - 3.5m x 3.3m Utility Room - 1.7m x 1.03m Separate w.c. With w.c. and w.h.b. Family Room - 5.1m x 2.4m
FIRST FLOOR Main Bedroom - 3.8m x 3.5m En Suite Shower, w.h.b. and w.c. Bedroom 2 - 3.6m x 2.1m Bedroom 3 - 2.4m x 2.1m Bedroom 4 - 3.83m x 3.06m Bathroom Inclusions Fitted carpets. Outside Gardens front, rear and side.

BASE INFORMATION:

Bed : 4
 Bath : 3

CONVENIENCE:

General Amenities: Double Glazed Windows,
Energy Savings Amenities: Oil Fired Central Heating,